

5 Hall sensor

- Measuring

- AC, DC, pulse and other complex current signals

- Features

- Small package size
 - Low power consumption
 - Extended measuring range

- Application

- AC variable speed drives
 - Battery supplied applications
 - Uninterruptible Power Supplies

- Technical data

Technical parameters		Open-loop	
		Real-time values	Hall (true RMS)
Output	Nominal value	Voltage: $\pm 5V \pm 4V$	Current: 4-20mA
	Zero offset voltage (current)	Voltage: $\pm 20mV$	Current: $\pm 0.05mA$
	Offset voltage (current) drift	Voltage: $\leq \pm 1.0mV/^\circ C$	Current: $\pm 0.04mA/^\circ C$
	Linearity	$\leq 0.2\%FS$	
Power voltage		DC $\pm 15V$ DC 12V/24V	DC 12V/24V
Bandwidth		0-20kHz	
Response time		$\leq 20 \mu s$	$\leq 1ms$
Dielectric strength		Permissible 3500VAC between input/output	
Accuracy class		1.0	
Environment	Temperature	$-40^\circ C \rightarrow +85^\circ C$	
	Humidity	Up to 95%,no condensing	
	Altitude	$\leq 3500m$	

Low voltage current transformer

● Specifications

Appearance	Type	Rated input	Auxiliary Power	Rated Output	Measuring Aperture (mm)		
	AHKC-EKA	± (50-500)A	± 12V ~ ± 15V	± 5V/4V	φ 20	Split	
	AHKC-EKAA	DC 0-(50-500)A	12V, 24V	4-20mA			
	AHKC-EKB	± (200-1000)A	± 12V ~ ± 15V	± 5V/4V	φ 40	Split	
	AHKC-EKBA	DC 0-(200-1000)A	12V, 24V	4-20mA			
	AHKC-EKC	± (500-1500)A	± 12V ~ ± 15V	± 5V/4V	φ 60	Split	
	AHKC-EKCA	DC 0-(500-1500)A	12V, 24V	4-20mA			
	AHKC-K	± (400-2000)A	± 12V ~ ± 15V	± 5V/4V	64 x 16	Split	
	AHKC-KAA	DC0-(400-2000)A	12V, 24V	4-20mA			
	AHKC-H	± (500-3000)A	± 12V ~ ± 15V	± 5V/4V	82 x 32	Split	
	AHKC-KA	± (500-5000)A	± 12V ~ ± 15V	± 5V/4V	104 x 36	Split	
	AHKC-HB	± (2000-40000)A	± 12V ~ ± 15V	± 5V/4V	132 x 52	Split	
	AHKC-HBAA	DC0-(2000-40000)A	12V, 24V	4-20mA			
	AHKC-E	± (50-500)A	± 12V ~ ± 15V	± 5V/4V	± 5V/4V	φ 20	
	AHKC-LT	± (100-800)A	± 12V ~ ± 15V	± 5V/4V	± 5V/4V	φ 32.5	
	AHKC-C	± (100-800)A	± 12V ~ ± 15V	± 5V/4V	± 5V/4V	30*10.5	
	AHKC-BS	± (50-500)A	± 12V ~ ± 15V	± 5V/4V	± 5V/4V	20.5*10.5	closed
	AHKC-BSA	DC0-(50-500)A	12V, 24V	4-20mA	± 5V/4V	43*13	closed
	AHKC-F	± (200-1000)A	± 12V ~ ± 15V	± 5V/4V	± 5V/4V	52*15	closed
	AHKC-FA	± (200-1500)A	± 12V ~ ± 15V	± 5V/4V	± 5V/4V	52*15	closed
	AHKC-HAT	± (400-2000)A	± 12V ~ ± 15V	± 5V/4V	± 5V/4V	52*32	closed

● Spec. and size (unit: mm)

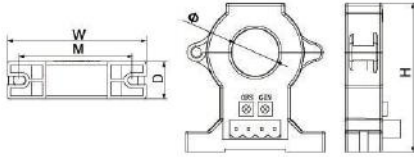


Fig.1

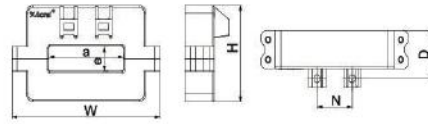


Fig.2

Size	Specification	Outline size			Through size			Mounting size		Figure
		W	H	D	a	e	Φ	M	N	
	AHKC-EKA	60	64	16	/	/	20	47	/	Fig.1
	AHKC-EKAA	60	64	16	/	/	20	47	/	Fig.1
	AHKC-EKB	100	102	24	/	/	40	80	/	Fig.1
	AHKC-EKBA	100	102	24	/	/	40	80	/	Fig.1
	AHKC-K	127	63	25	64	16	/	/	30	Fig.2
	AHKC-KAA	127	63	25	64	16	/	/	30	Fig.2
	AHKC-H	149	79	25	82	32	/	/	46	Fig.2
	AHKC-KA	176	95.5	29	104	36	/	/	60	Fig.2
	AHKC-HB	204	111.5	29	132	52	/	/	48 x 2	Fig.2

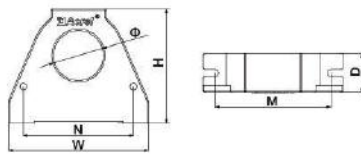


Fig.3

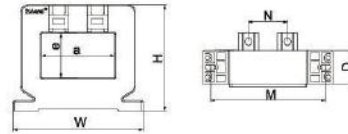


Fig.4

Size	Specification	Outline size			Through size			Mounting size		Figure
		W	H	D	a	e	Φ	M	N	
	AHKC-E	53	72	16	/	/	21	47	/	Fig.3
	AHKC-LT	90	73.5	25	/	/	32.5	74.5	71	Fig.3
	AHKC-BS	43	32.5	19	20.5	10.5	/	/	/	Fig.3
	AHKC-BSA	43	32.5	19	20.5	10.5	/	/	/	Fig.3
	AHKC-F	74	57	22	43	13	/	/	22	Fig.4
	AHKC-FA	94	60.5	26.5	52	15	/	83	28	Fig.4
	AHKC-HAT	94	76.5	24	52.5	32	/	83	28	Fig.4