

ADL100-EY&ADL300-EY



General

ADL100-EY single phase pre-paid meters with intro-control, ADL300-EY three phase pre-paid meters with intro-control are used for calculating the single and three phase active energy respectively on the frequency of 50/60 Hz. The meter has functions of pre-paid, load controlling and RS485 communication etc. meet the related technical requirements of electronic power meter in the IEC62053-21, IEC62053-22 standards.

Product Functions

Function	Description		Provide
	ADL100-EY	ADL300-EY	
Measurement of kWh	Total active kWh (positive and negative in total)		■
Electrical parameters	U, I, P, Q, S, PF, Hz		■
Pre-paid mode	Through RS485 communication prepaid recharge, data encryption		■
Control	Magnetic latching relay		■
LCD display	8 digits		■
Communication	RS485, MODBUS-RTU		■

Note: (■: standard; □: optional)

Technical Parameter

Electric performance

Technical parameter		ADL100-EY	ADL300-EY
Voltage	Nominal voltage	220V	3×220/380V
	Nominal frequency	50/60Hz	
	Consumption	<4VA(Each phase)	
Current	Maximum current	60A	6A,80A
	Starting current	Connect directly: 0.04A, connect via CT: 0.002A	
	Consumption	<4VA (Maximum current)	
Measurement performance	Accuracy	Class 1	Class 0.5s

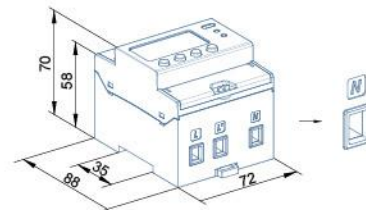
Technical parameter		ADL100-EY	ADL300-EY
Clock	Accuracy	Error ≤0.5s/d	
	width	80ms±20ms	
Active pulse	constant	1600imp/kWh	6400imp/kWh,400 imp/kWh
	Interface	RS485	
Communication	Protocol	MODBUS-RTU	

Working environment

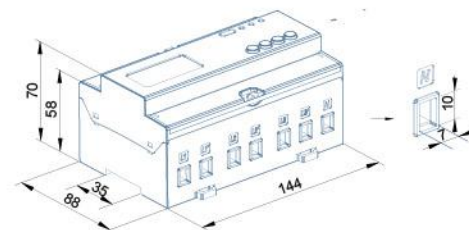
Temperature range	Operating	-25℃~55℃
	Storage	-40℃~70℃
Relative humidity		≤95%(No condensation)
Altitude		≤2000m

Dimension drawings (Unit: mm)

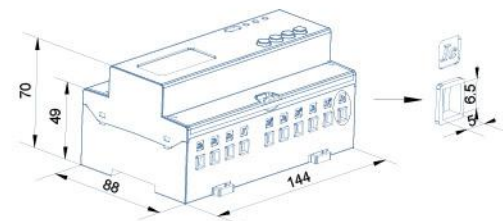
ADL100-EY



ADL300-EY



direct connect

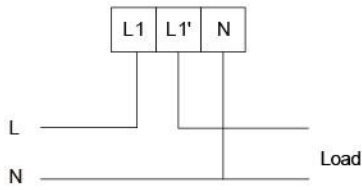


connect via CT

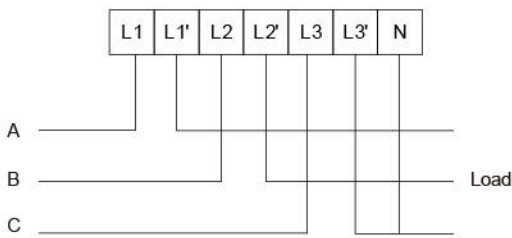
Note: The torque of direct connect should not be greater than 4.0N·m, and the torque of connect via CT should not be greater than 2.0N·m.

Wiring and installing

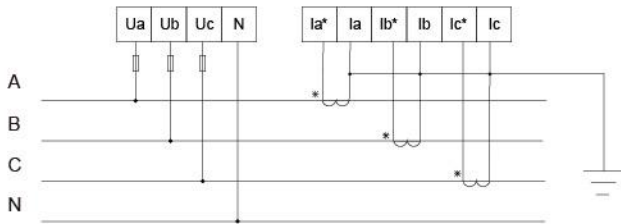
■ Wiring



ADL100-EY



ADL300-EY Three phase four lines direct connect



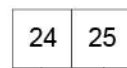
ADL300-EY Three phase four lines connect via CT



RS485



Active power



Second Communication



Opening



Closing

Auxiliary function

■ Installing



ADL100-EY installing



ADL300-EY installing

Note: DIN 35 mm rail installation.

Display and operation

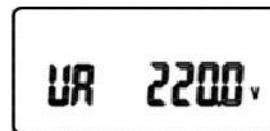
■ Display examples



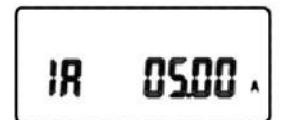
Dump energy



Total Power



Voltage



Current